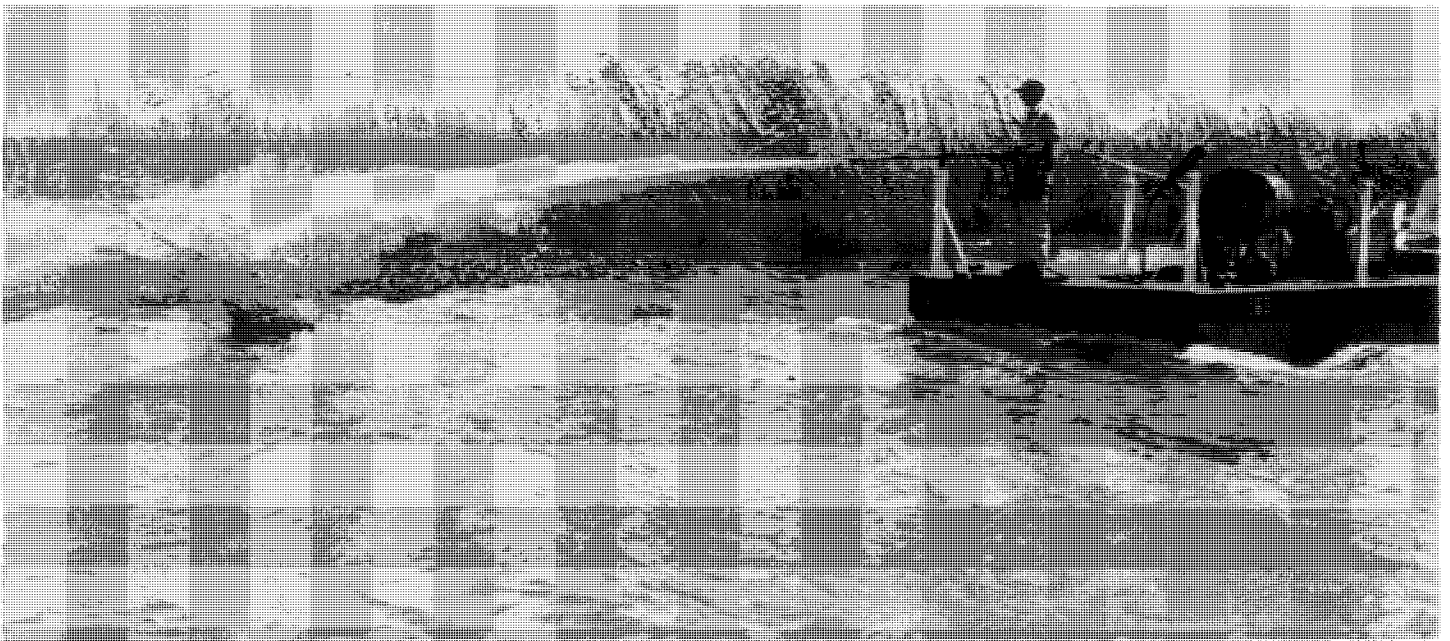


PHOTO'S OF THE WAY IT WAS



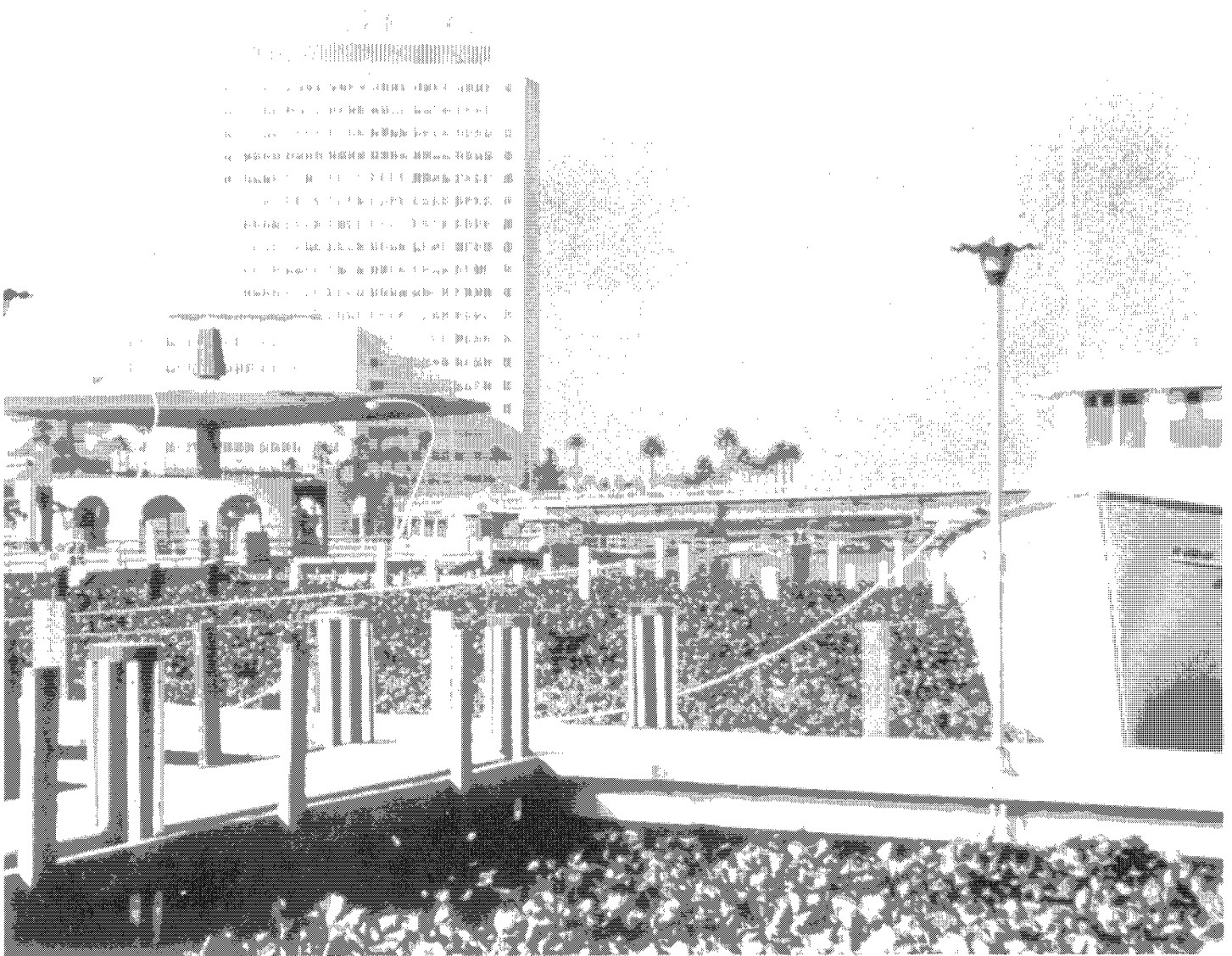
Officers 1965-1966



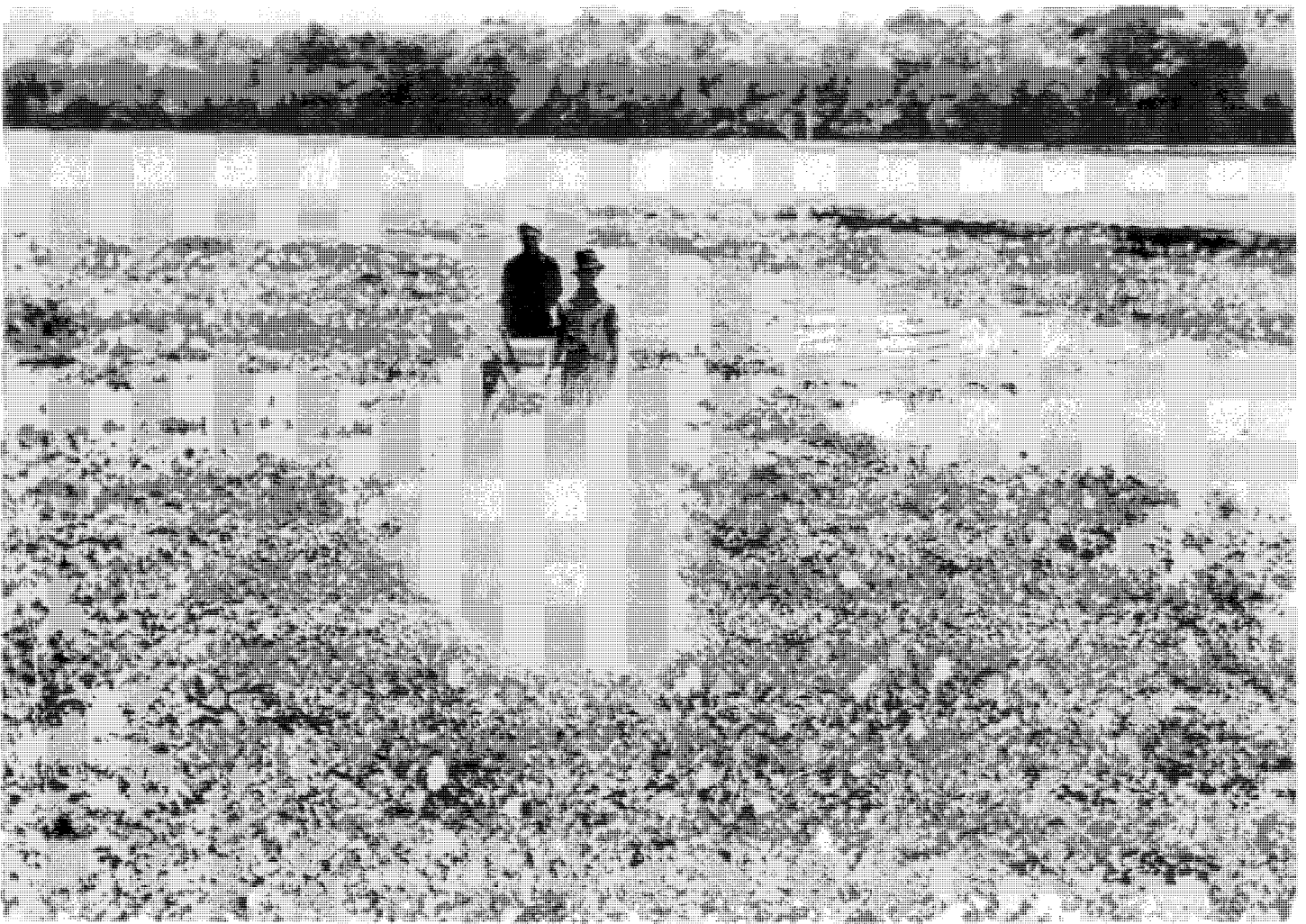
Corps spray barge probably in Louisiana – late 40's, early 50's (USACE)



Corps destroyer boat probably somewhere in Louisiana – Ca 1940 (USACE)



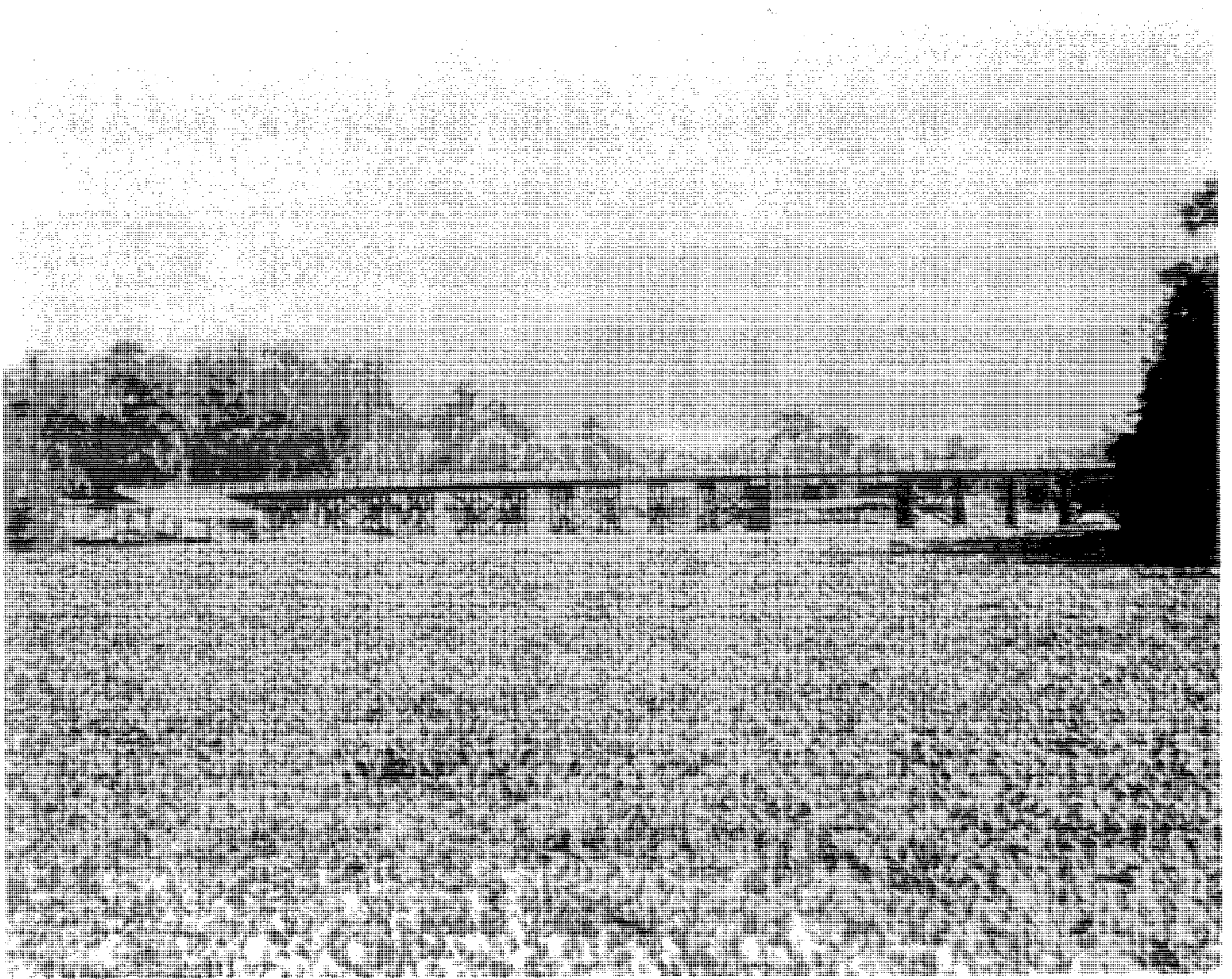
Downtown Jacksonville in Summer of 1967 (USACE)



Corps of Engineers Sawboat, St. John's River – 1939 (USACE)



Residential canal probably near Ft. Lauderdale in 1960's (ANON)



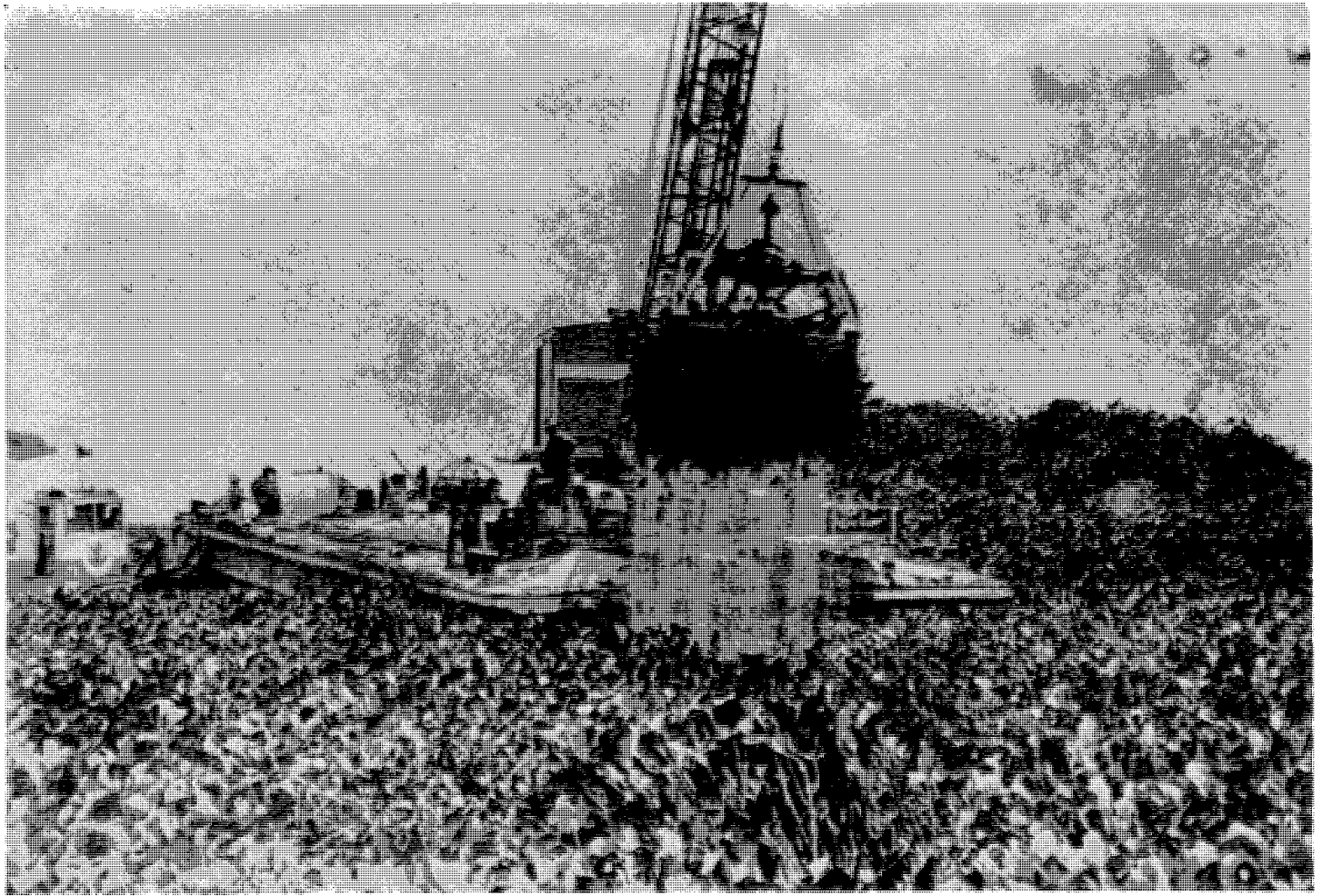
Ortega River Bridge near Jacksonville, Florida – 1940's (USACE)



Aerial Spraying of hyacinths in 1950's (John W. Woods, Hyacinth Contr. J. 2:19)



West Palm Beach Canal – 1939 (USACE)



Cleaning a Canal near Clewiston – 1937 (USACE)



2,4-D Application on Trout Creek near Palatka, Florida – 1949 (USACE)

The E. O. Painter Printing Company congratulates the Aquatic Plant Management Society on its twenty-fifth anniversary celebration. Printing the society's journal for over twenty years, we appreciate the close relationships which have resulted from working with the society's board members and editors.